

CITIZEN

Micro HumanTech

Confidence in Point-Of-Sale

The fully loaded high end thermal printer with built in protection



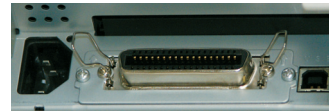
CT-S2000/2000L

One Touch Top Cover

Spill-Shield™ design to prevent damage from moisture or foreign objects to the internal mechanism. This makes it the best protected printer at the POS. No matter where you are: bar, restaurant or shop nothing can stop your printer to do it's job.

Dual Interface

USB is default in addition to serial or parallel interface boards. This makes the CT-S2000 a future-proof investment.



Internal Power Supply

All 80mm POS printers from Citizen offer an internal power supply.

CT-S2000 / 2000L

POS

Applications

- Receipt
- Coupon
- Ticket
- Daily report
- Kitchen
- Delivery slip
- Barcode
- Weigh scales
- Kiosk



One touch cover open

Available in black



Splash proof cover

CITIZEN

Micro HumanTech

Options

Lable type



Interface cards



Parallel (TA66811-0)



Serial (TB66832-00F)



Ethernet (950053-00)

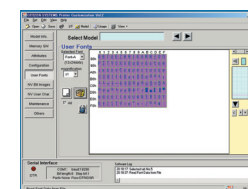
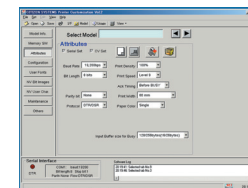
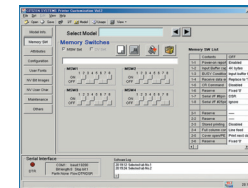
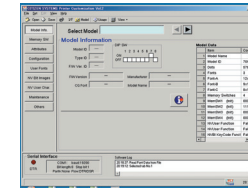


USB

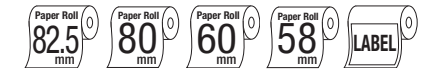
Specifications

Printing method	Line thermal dot printing
Printing width	82.5mm paper: 80mm/640 dots, 80mm paper: 72mm / 576 dots, 60mm paper: 54,5mm / 436 dots, 58mm paper: 54mm / 432 dots
Dot pitch	8 x 8 dots/mm (203 dpi x 203 dpi)
Printing speed	Max. 220mm/sec (52 lines/sec)
Number of columns	82.5mm paper: Font A - 53 columns / Font B - 71 columns / Font C - 80 columns 80mm paper: Font A - 48 columns, Font B - 64 columns, Font C - 72 columns 60mm paper: Font A - 36 columns / Font B - 48 columns / Font C - 54 columns 58mm paper: Font A - 35 columns / Font B - 46 columns / Font C - 52 columns
Character size (WxH)	Font A: 1.25 x 3.00mm (12 x 24 dots) Font B: 0.88 x 2.13mm (9 x 17 dots) Font C: 0.88 x 2.00mm (8 x 16 dots)
Character table	Code page 437, 850, 852, 857, 858, 860, 863, 864, 865, 866, Katakana, WPC1252, Thai code 18
Barcode type	UPC-A/E, JAN-13/8, ITF, Code 39, Code 128, CODABAR, Code 93
Line spacing	4.23mm (1/6 inch); can be set by a command.
Paper	82.5/80/60/58mm x Ø102mm
Interface	Parallel (IEEE 1284) & USB, Serial (RS-232C) & USB
Input buffer	4K bytes / 45 bytes
NV user memory	384K bytes
Drawer kick-out	2 Drawers
Power supply	Input: AC 100-240V, 50/60 Hz, 150VA Output: DC24V, 2A DC 24V±7% (DC power supply type)
Weight	AC power type; 2.0kg / DCP power type: 1.8kg
Dimensions (W x D x H)	147 x 207 x 147mm
Operating environment	5~40°C, 10~90% RH (No condensation)
Storage environment	-20~60°C, 10~90% RH (No condensation)
Reliability	Main unit: 20,000,000 lines, thermal head: 100,000,000 pulses or 150km Auto cutter: 2,000,000 cuts
EMC and safety standards	UL, C-UL, FCC Class A, TUV-GS, CE marking, CCC

Customization Software



Features



- 220mm/sec high-speed printing
- 82.5/80/60/58mm selectable paper width
- One touch cover open and Easy paper loading
- Cutter (full/partial)
- Front paper exit
- Splash proof design (Conform to IPX1)
- Larger paper roll capability as Ø 102mm
- Optional interface cards
- USB is default in addition to Serial or Parallel interface board
- Built-in AC adaptor
- Black mark function (option)
- Cash drawer kick-out
- Bitmap data registration (NV memory)
- Barcode printing
- ESC/POS compatibility
- Page mode
- Two color printing
- Smoothing font
- Label printing (CT-S2000L)
- Easy customization by software
- Available in white, black or dark grey (option)
- Driver: Win2000/XP/Vista/2003 Server, OPOS 1.8, CUPS

Type Classification

CT-S2000 DC RS E BK L

1) 2) 3) 4) 5) 6)

- | | | | | | |
|----------------------|--|--|-------------------------|---|--|
| 1) Model type | 2) Power Supply | 3) Interface | 4) Character set | 5) Body case color | 6) Label/Black mark |
| CT-S2000 | None: AC power type
(Built-in Power supply)
DC: DC power supply type | PA: Parallel (IEEE1284) & USB
RS: Serial (RS-232C) & USB
UB: USB only (option) | U: USA
E: Europe | WH: Cool white
BK: Black
GR: Dark Grey (Option) | None: Standard (No sensor type)
L: Label sensor type
M: Black mark sensor type |