



Safes

www.aks-anker.com

**ANKER**   
selection

## CounterCache Security in a box

### Streamlines cash handling process

With over 1,000,000 units installed worldwide, our CounterCache units protect well over € 2 billion in global retail cash every single day. CounterCache increases POS security by removing the temptation for till snatches or internal shrink. It streamlines the cash handling process by reducing or removing the need for time consuming skims. It is time tested design stores notes securely whilst at the same time making for simple operation and excellent note presentation.

CounterCache is available as basic and classic variation.

The **CounterCache Basic** is ideal for retailers looking for a low cost, simple cash deposit box solution. The rugged metal box is locked to a mounting. The whole unit can be removed by unlocking it from the mounting using a key to then be taken to the cash office to be emptied. Dual key access provides additional security by preventing unauthorized access by just one person.

The **CounterCache Classic** is perfect for busy retail environments. Unlike the CounterCache Basic, once installed at the POS the CounterCache Classic is permanently in place. Cash fed into the unit is stored in an internal cassette. When full, using a key the cassette can quickly be exchanged for another empty one; minimising downtime in shift changes and cash lifts.



CounterCache Basic

> Increase POS security

> Streamlines cash handling process

> Rugged metal box

> Easily fits with existing cash desk



CounterCache Classic

**ANKER keeps its quality promise and offers you 100 % security at any time.**

360° safety – **100% ANKER**





Safes

## CounterCache Security in a box

### Less skims

Fewer smaller cash movement save time and increase security.

### Less temptation

Staff is less likely to be targeted for an attack.

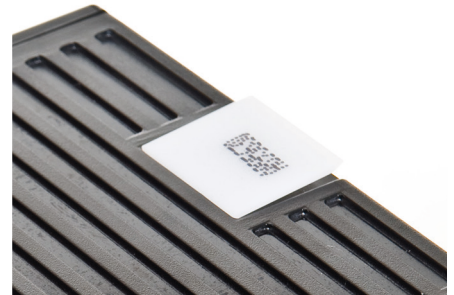
### Less downtime

Cash is moved discretely and out of sight in a secure unit.

### Less shrink

Cash and valuables are better protected against theft.

- › Streamlines cash handling process
- › Compact and robust metal housing
- › Easily fits with existing cash desk configurations
- › No cash is visible, reducing the temptation for till snatches and improving security



Tamper evident seals with serial number or blank options provide a complete audit trail...



... for cassettes removed from the POS (CounterCache Classic only).

ANKER is an official partner of



**Anker Kassensysteme GmbH**

Striegauer Str. 21  
33719 Bielefeld (Germany)

☎ +49 (0) 521 301 0  
✉ [info@aks-anker.de](mailto:info@aks-anker.de)  
🌐 [www.aks-anker.com](http://www.aks-anker.com)

